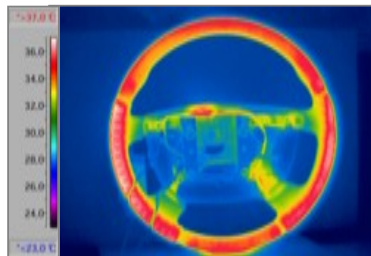
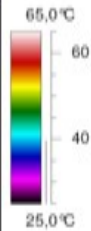
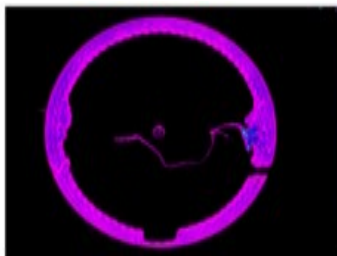


Heated Steering Wheels



Unique heating technology



Characteristics:

Main Features:

- Easy mountable heating element which can be applied underneath leather, wood shells, wood inserts or a combination.
- No „READ THROUGH“ of the heating element under leather covers, with “wire-technology” heating element.
- The heating element copper wires (“wire-technology”) are embroidered on a special support fabric and/or foam.
- 2 technologies are available for copper wires;
 - **laywire technology** - wire is routed on the PU foam and is held in place with a fleece lamination material
 - **sewing technology** - wire is routed on the PU foam and is held in place with a polyester thread
- Heating element thickness can be between 0.8 and 1.5mm
- Thickness at harness conn. area 3mm.
- Typical operating current is 8A at 14.5V or 6.62A at 12V. This is determined by how much current the vehicle can supply.
- With a current draw 6 A, typical Range: 0 °C to +25 °C in 6 minutes.

