

Pelvic-Thorax Side Airbag



Pelvic-Thorax Side Airbag



Characteristics:

Performance

- Tailorable inflator output and adaptable 2 chamber cushion design (tethers, venting, size)
- KSS Double Tuck Accordion fold
- Out-of-Position performance: TWG-compliant
- USNCAP 5 Star Rating achievable

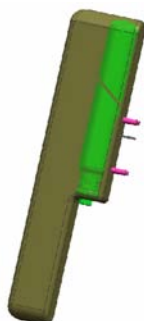
Technical Data

- Bag volume: 12 - 16 ltr.
- Inflator: Cold Gas (Hybrid inflators are optional)
- Output range: 0.92 to 1.21 mole of gas
- Weight: < 680 gr. (16 ltr. version)

Main Features

- Single stage adaptive applications
- Improved restraint performance for variable occupant sizes over traditional SAB modules
- Applicable for all vehicle markets
- Cost effective 4 piece side airbag design
- Hidden module within the seat or Class A type module with attached deployment door available
- Soft pack – or plastic clam shell module covers available
- Module provided with exposed igniter for vehicle harness direct connect option
- Dual M6-bolt seat attachment bracket, complete with LH-RH features.
- BAM approved module design

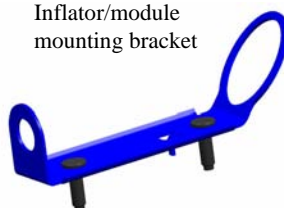
Module Assembly



Inflator



Inflator/module mounting bracket



Cushion Assembly



Module cover

